



Hemnall Street, Epping, CM16

BUTLER & STAG



**Guide Price £225,000 -  
£250,000**  
**One double bedroom  
apartment located in  
the heart of Epping  
High Street.**

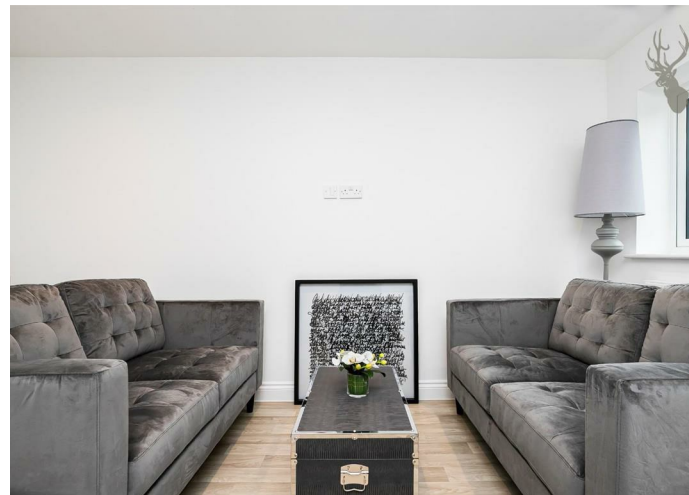


## Leasehold

- Open Plan Living Room/Kitchen
- One Double Bedroom
- Secure Entry System
- Private Communal Garden
- 0.4 Miles To Epping Central Line Station

The apartment has been designed thoughtfully with a modern, busy lifestyle in mind. They include one double bedroom, fully-fitted kitchen with appliances, fitted shower rooms and a communal garden.

Feel connected to every part of the electric lifestyle Epping has to offer. Clasper House stands in the very heart of the town centre, meaning you are a short stroll away from all the bars, restaurants and shops the community has to offer. As a cultural hub, Epping has great links to London via the Central Line and motorways nearby, making it easy to work and socialise in the capital.



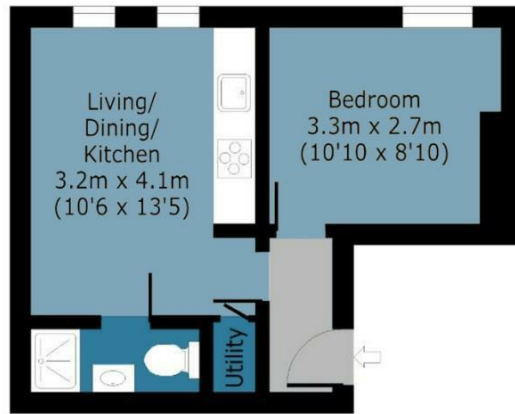


## Clasper House

Approx. Gross Internal Area 28.61 Sq M ( 308 Sq Ft )

**BUTLER & STAG**

**Ground Floor**  
Approx. 28.61 Sq. meters (308 Sq. feet)



Floor plan is for illustrative purposes only and is not to scale. Every attempt has been made to ensure the accuracy of the floor plan shown, however all measurements, fixtures, fittings and data shown are an approximate interpretation for illustrative purposes only.

IMPORTANT NOTICE - These particulars have been prepared in good faith and they are not intended to constitute part of an offer or contract. We have not performed a structural survey on this property and the services, appliances and specific fittings have not been tested. All photographs, measurements, floor plans and distances referred to are given as a guide and should not be relied upon.

**BUTLER & STAG**

☎ 01992 667666

🏠 4 Forest Drive, Theydon Bois, Essex, CM16 7EY

✉ theydon@butlerandstag.com

[www.butlerandstag.uk](http://www.butlerandstag.uk)